

# Gary D. Sabbadini, D.D.S., A.P.C.

## Dentistry for Children & Young Adults

*Diplomate, American Board of Pediatric Dentistry*

*Fellow, American Academy of Pediatric Dentistry*

*Fellow, International College of Dentists*

*Fellow, Pierre Fauchard Academy*

### Digital Panoramic X-Ray Questions & Answers

A panoramic x-ray is a screening film that shows an overview of the upper and lower jaws, sinus, temporomandibular joint, and other anatomic features. We use a digital panoramic machine in our office to minimize the radiation exposure.

#### We use digital panoramic x-rays to screen for the following:

- Cysts, tumors, and other pathology
- Missing or extra teeth
- Impacted teeth
- Malformed permanent teeth
- Deviations in eruption patterns
- Pathology around the roots of the baby and permanent teeth

#### When do children usually get a digital panoramic x-ray?

Usually between 7 and 9 years old depending upon the number of permanent teeth already erupted, clinical observation of infection or abnormality, or orthodontic problems. Taking a panoramic x-ray is painless and doesn't require placement of films into your child's mouth. Even children with sensitive gag reflexes usually do fine.

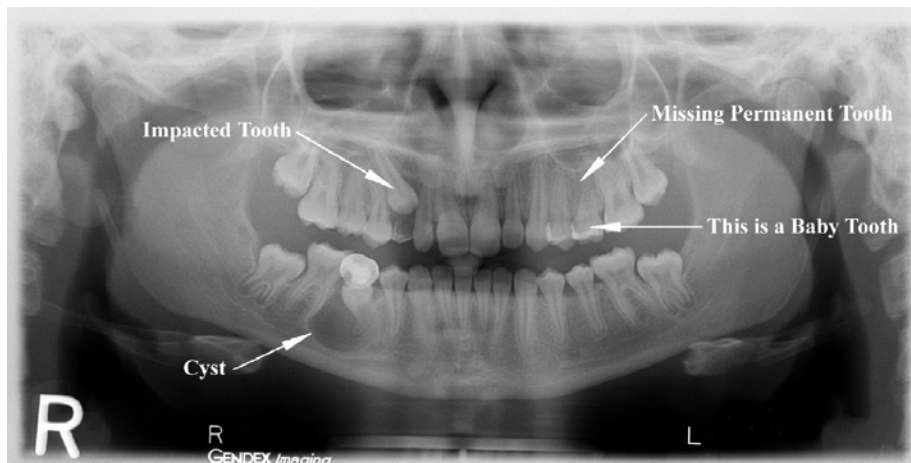
#### Will a digital panoramic x-ray expose my child to a lot of radiation?"

Because our panoramic x-rays are taken digitally, they have very minimal radiation exposure. The diagnostic benefits of detecting pathology, infection, and tooth abnormalities far outweigh any small exposure.

#### Will my insurance cover the panoramic x-ray fee?

Digital panoramic x-rays are not a special film and are considered a general screening x-ray that every patient should obtain by a certain age. Insurance should cover the fee as they would any diagnostic x-ray.

#### An example of a panoramic x-ray showing three different conditions that would have been missed without this x-ray:



1500 Tara Hills Drive • Suite 100 • Pinole, CA 94564

(510) 724-4400 (Office) • (510) 724-4402 (Fax)

[www.PinolePediatricDentist.com](http://www.PinolePediatricDentist.com)